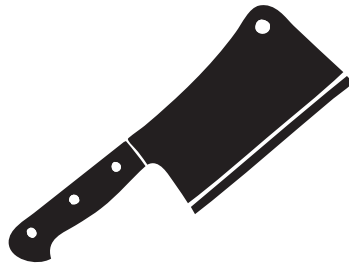


# SHORT ----- CUTS



*All business  
No bullsh\*t*

**GUARDIAN CANTILEVER | INSTALL MANUAL**

**Downee**

# WELCOME!

Fed up with all the bullsh\*t in manufacturer's instructions? The backbone of Short Cuts manuals is short and snappy info to get the best results fast.

Produced in-house by the team at Downee, Short Cut manuals are created using plain English and our own real-world install experiences. We've chopped off the fat leaving only the meaty bits you need to get a gate system rocking in record time.

INDEX	PAGE
DIMENSIONS . . . . .	1
FOOTINGS . . . . .	2
HARDWARE PARTS . . . . .	3
INSTALLATION . . . . .	4
GATE ADJUSTMENT . . . . .	10

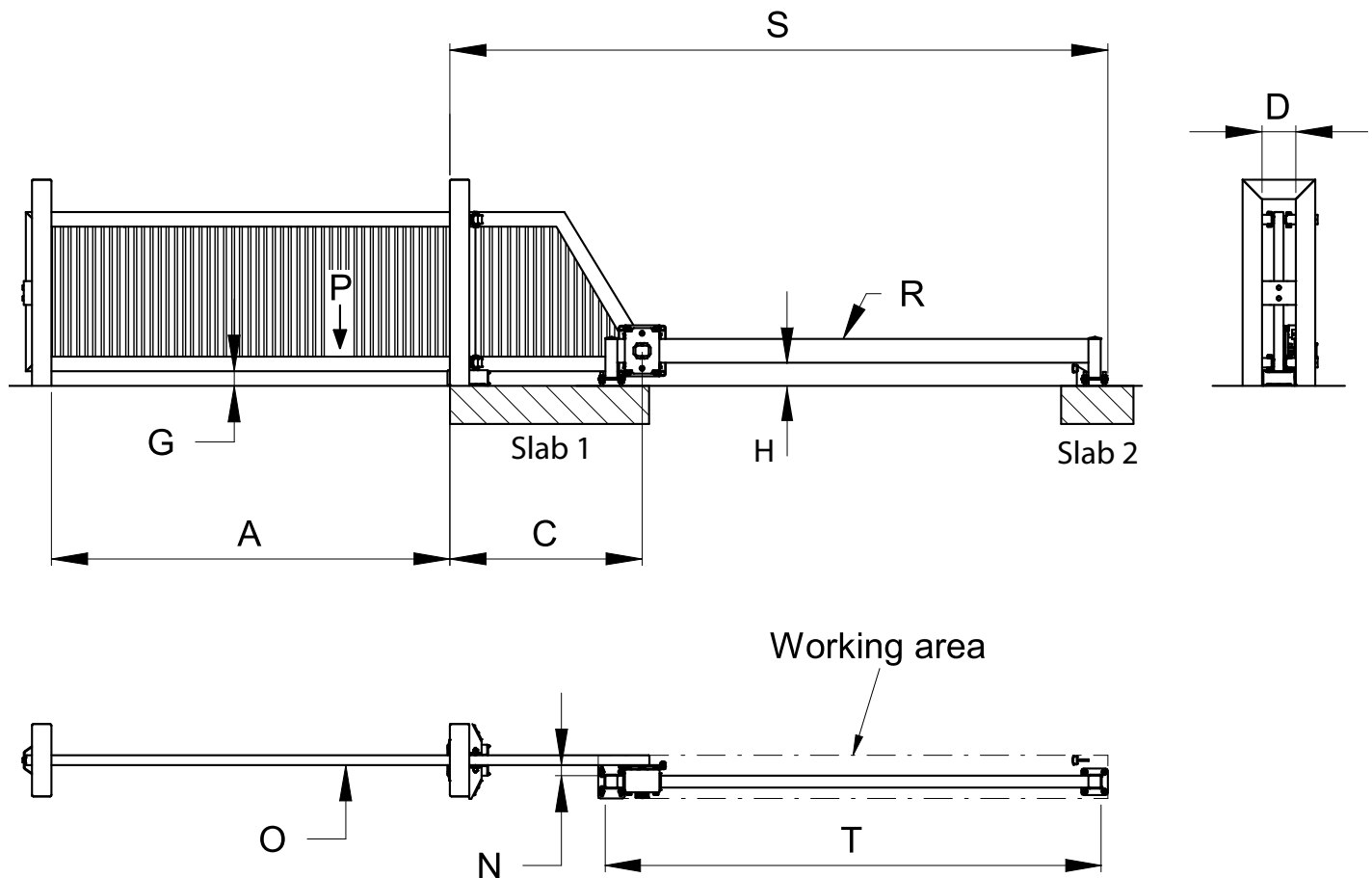


Look for Short Cuts install videos on our website.

**TROUBLESHOOTING**

Call our Tech Team **1800 241 733**

# DIMENSIONS



## SPECS RELATING TO ALL GATES

Max. Gate Weight, (P) kgs	Slab 1	Slab 2	Slab Depth	Under Gate Clearance min. (G)	Guide Post gap min. (D)	End Rail Offset (N)	End Rail clearance (H)
1500	1.5 m <sup>3</sup>	0.15m <sup>3</sup>	800 (500 min.)	90mm	200mm	60mm	170mm

Slabs should be 25MPa concrete, 20mm aggregate with F72 mesh placed centrally top and bottom with 100mm clearance. Minimum slab depth.

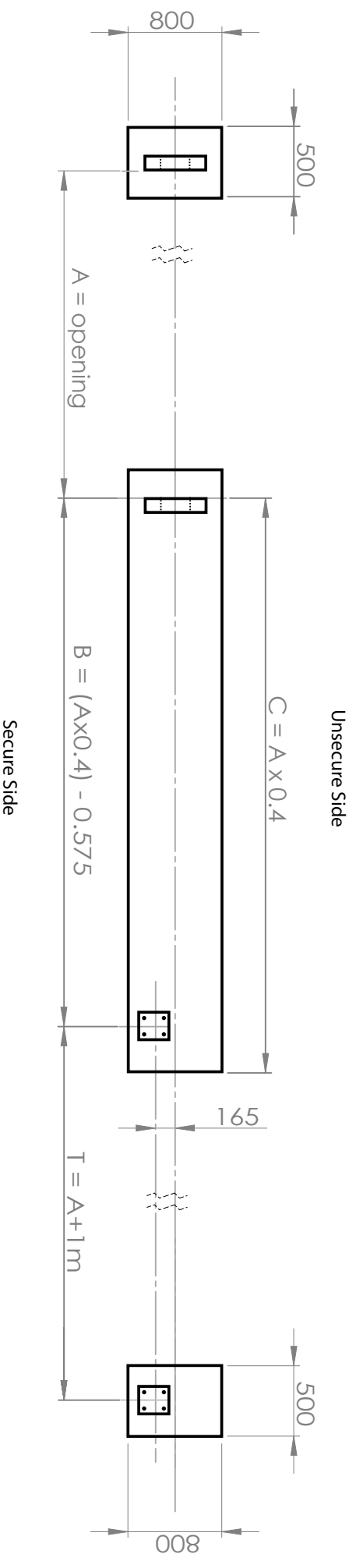
## SPECS RELATING TO OPENING SIZE

Opening (A), mm	Gate Tail min (C), m	End Clearance minimum (S), m	End Rail Length (T), m	Gate Bottom Rail Material (O)	End Rail Material (R)
6	2.4	8.75	6.7	150x100x5.0 RHS	150x100x4.0 RHS
7	2.8	10.25	7.7	150x100x5.0 RHS	150x100x4.0 RHS
8	3.2	11.5	8.7	150x100x5.0 RHS	150x100x4.0 RHS
9	3.6	13.0	9.7	200x100x5.0 RHS	150x100x5.0 RHS
10	4	14.5	10.7	200x100x5.0 RHS	150x100x5.0 RHS
11	4.4	15.75	11.7	200x100x6.0 RHS	150x100x6.0 RHS
12	4.8	17.25	12.7	200x100x6.0 RHS	150x100x6.0 RHS

# FOOTINGS

Concrete foundations are the basis for a successful installation and gate's long-term performance. Excavating and pouring concrete footings expensive and a time consuming, get it wrong and you risk wasting days on site. This guide takes the guess work out of footings for any gate size.

## TYPICAL CONCRETE SLAB (Plan View)

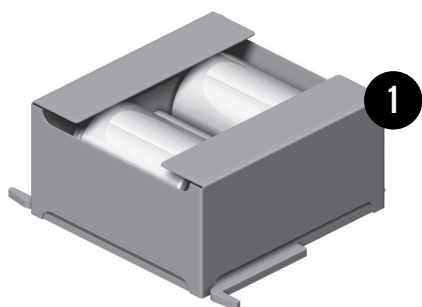
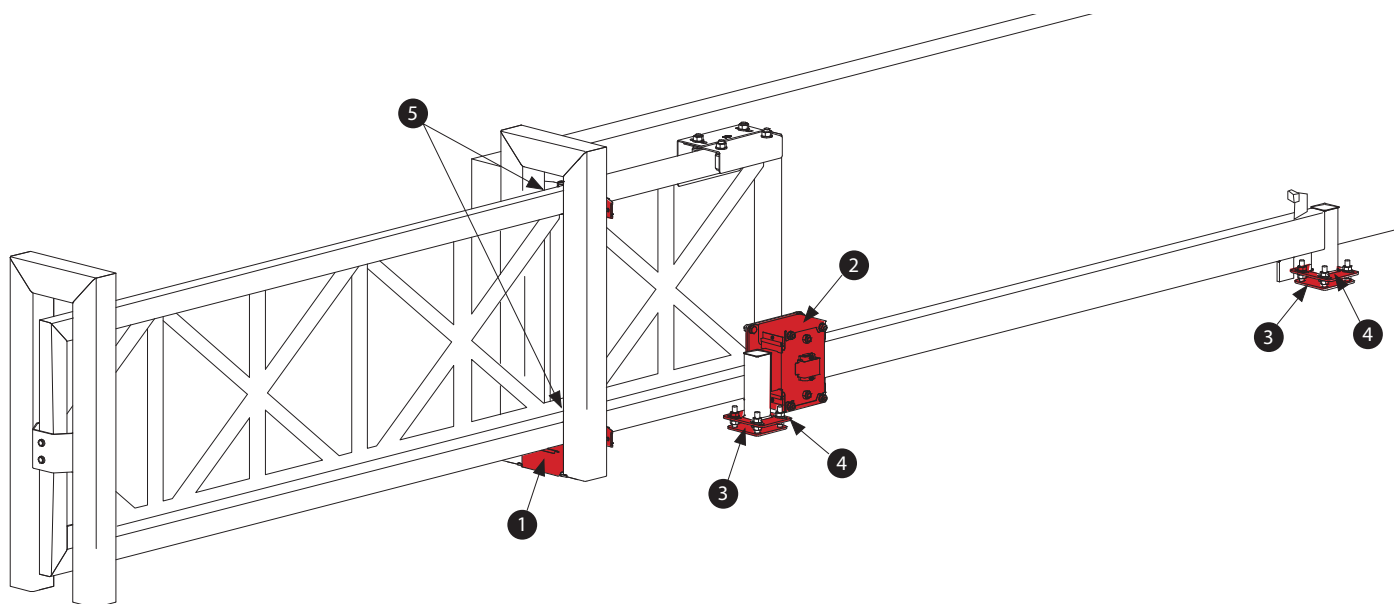


## FOUNDATION

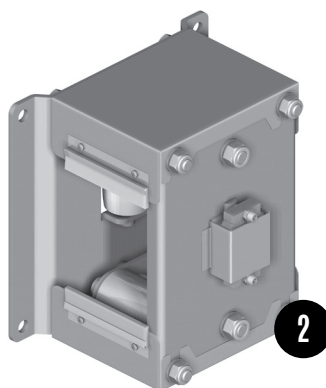
1. Concrete to be 25MPa/20mm aggregate
2. Top and Bottom F72 mesh to be placed centrally to concrete footings with minimum 100mm cover
3. 16mm all-thread, chemset 150mm above footings.

# HARDWARE PARTS

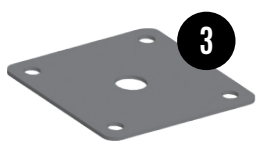
A Guardian Gate Pack includes these parts



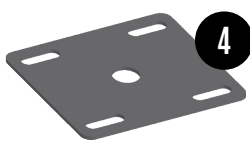
**BASE ROLLER ASSEMBLY**



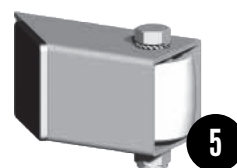
**TAIL ROLLER ASSEMBLY**



**TAIL MOUNT PLATE (x2)**

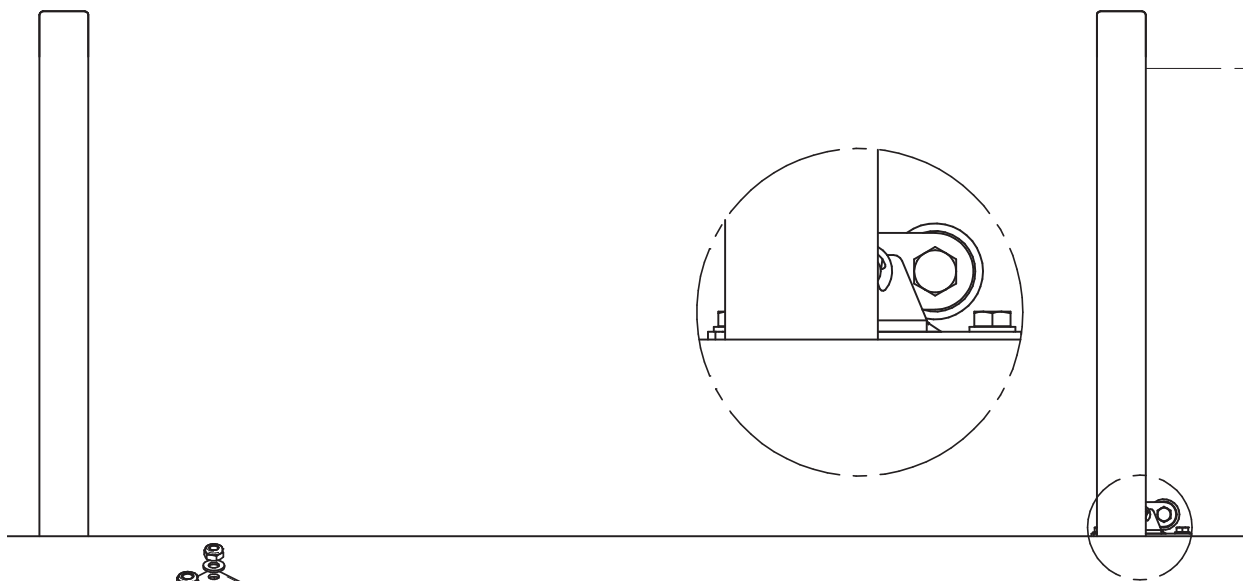
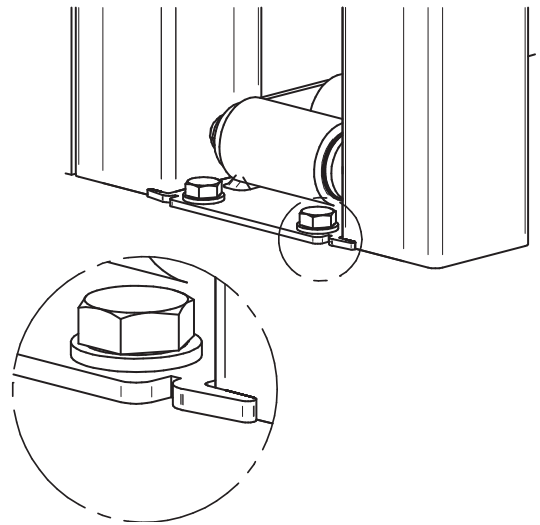
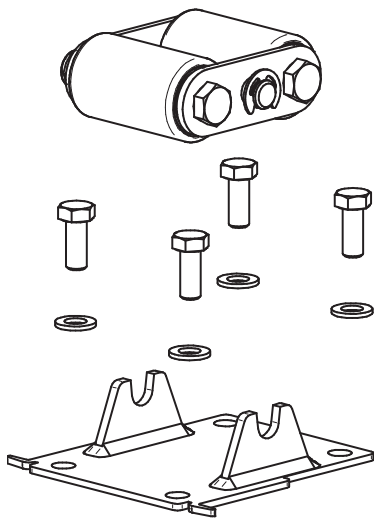
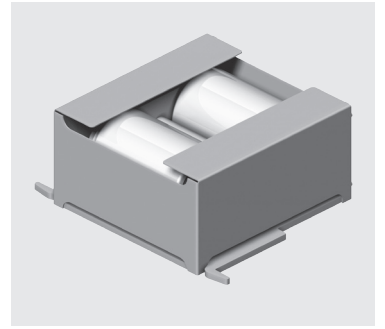


**TAIL ADJUSTER PLATE (x2)**

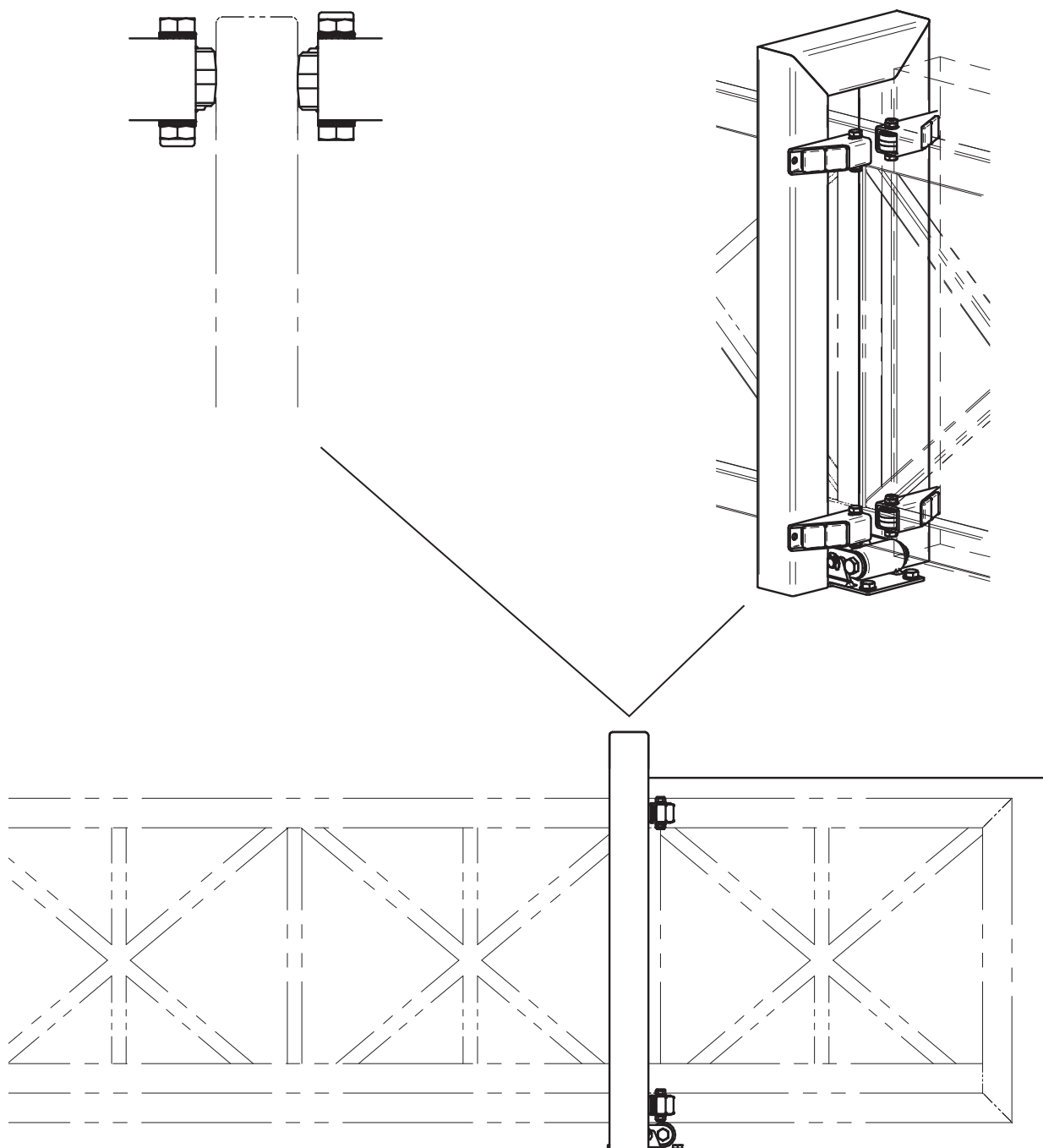
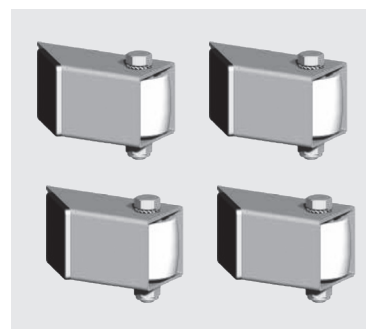


**ADJUSTABLE GUIDE ROLLER (x4)**  
(Supplied in Full Pack only)

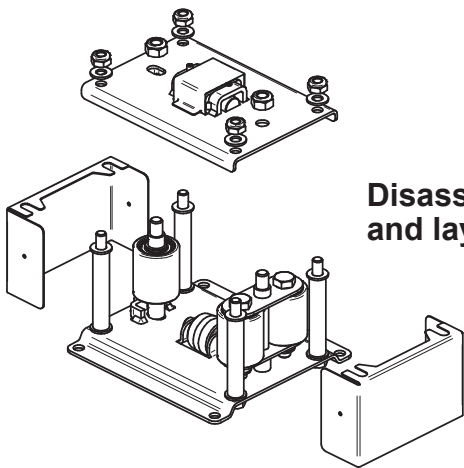
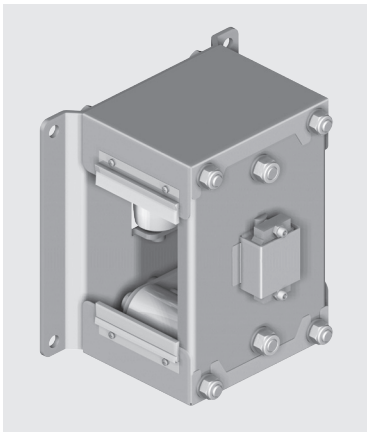
# BASE ROLLER ASSEMBLY



# ADJUSTABLE GUIDE ROLLER

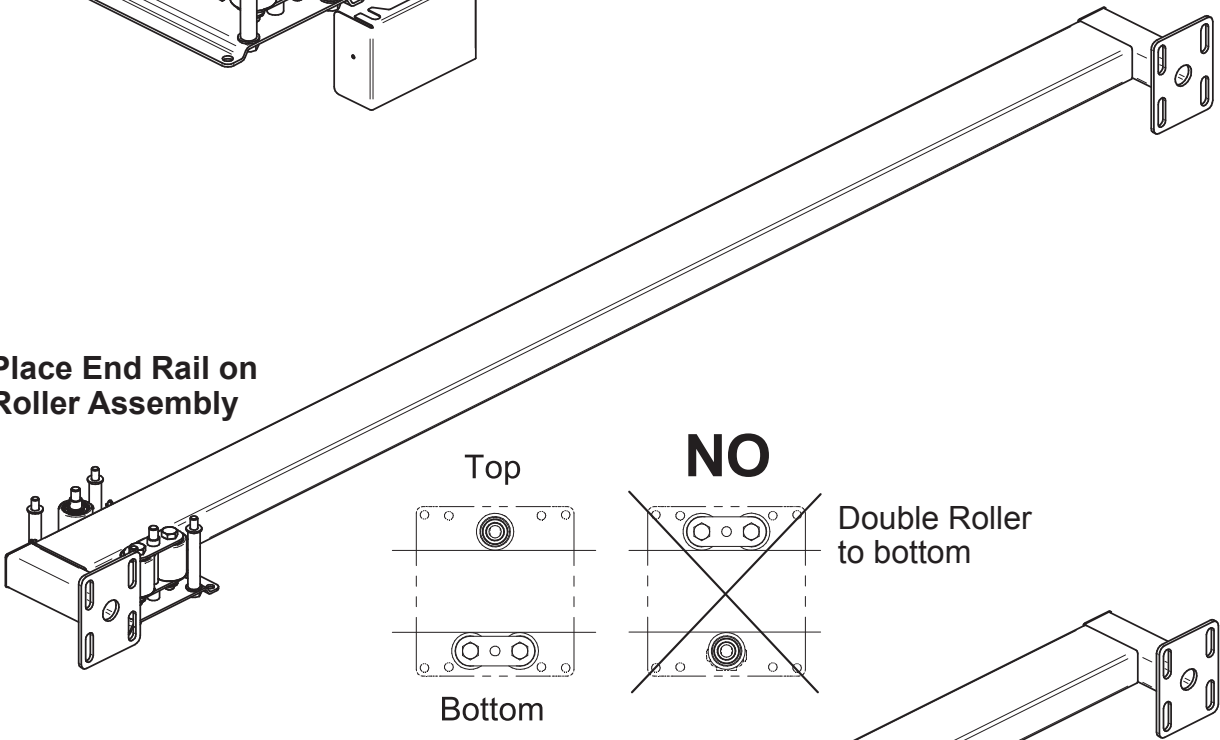


# TAIL ROLLER ASSEMBLY

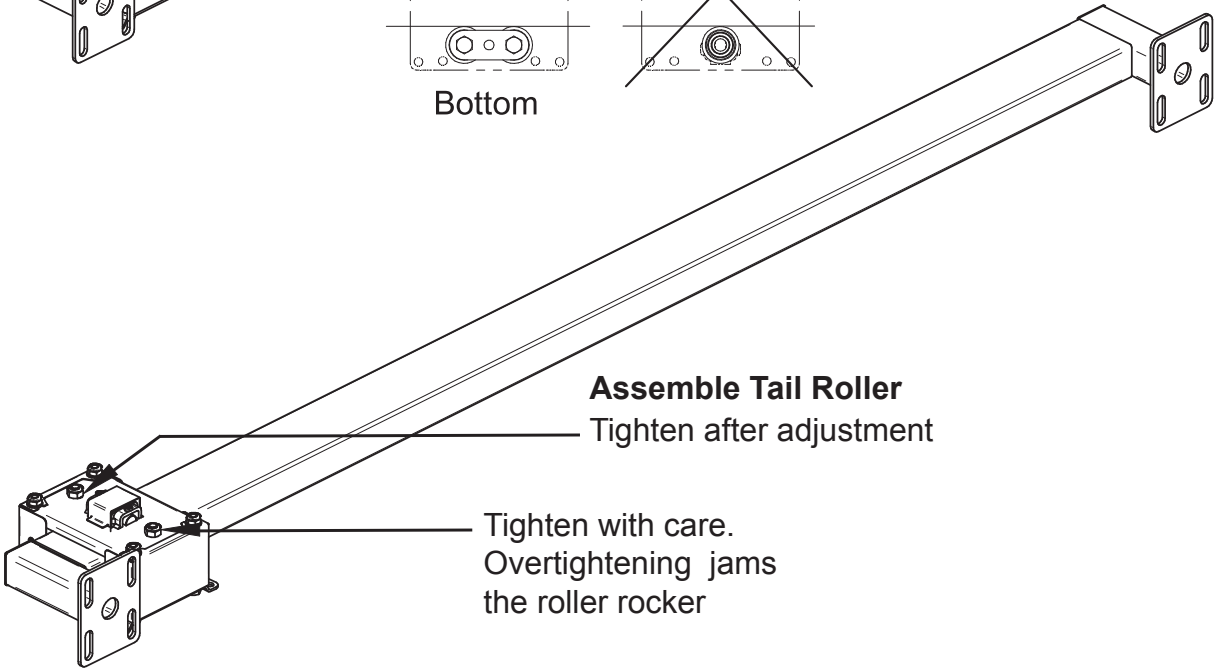


Disassemble Tail Roller  
and lay it on its side

Place End Rail on  
Roller Assembly

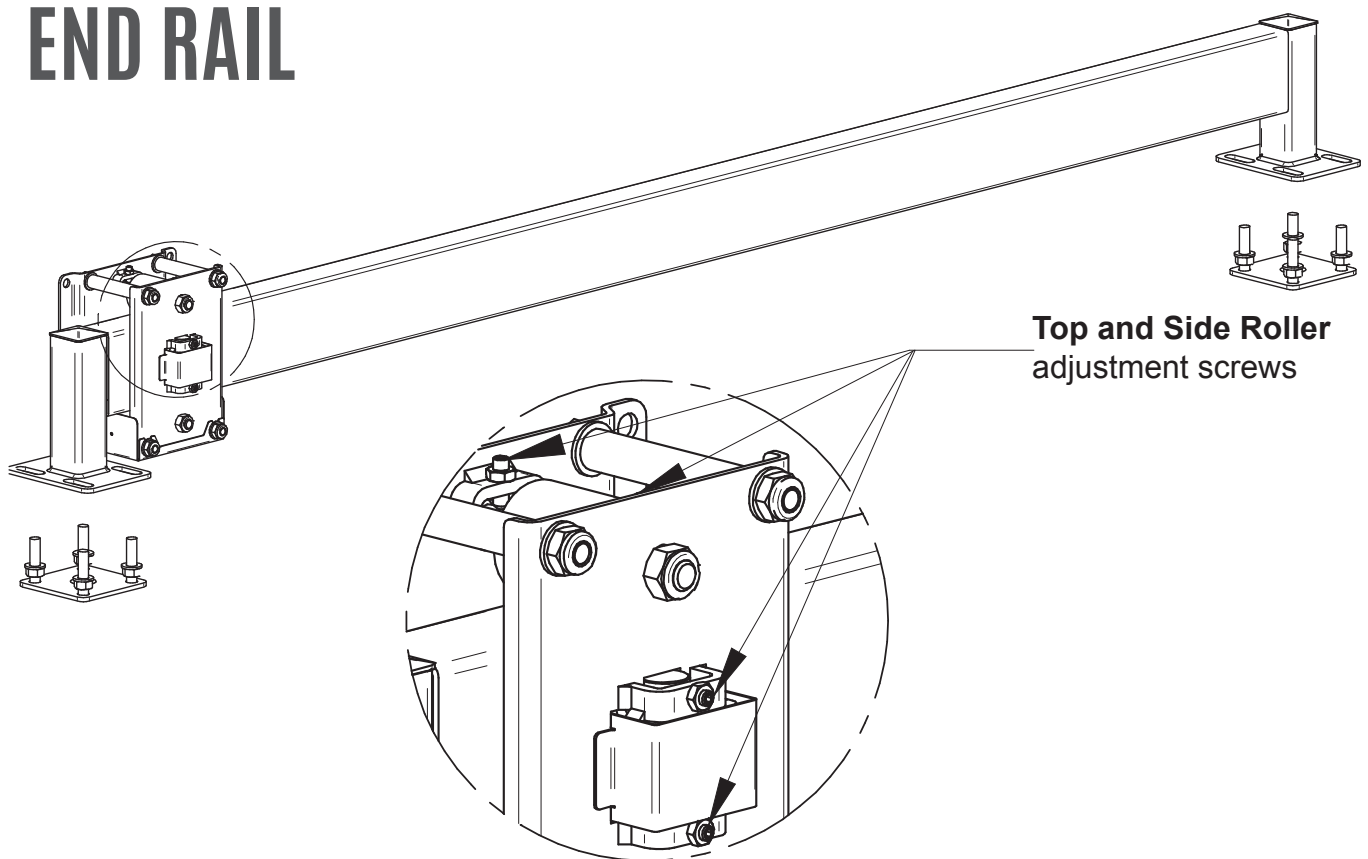


Assemble Tail Roller  
Tighten after adjustment

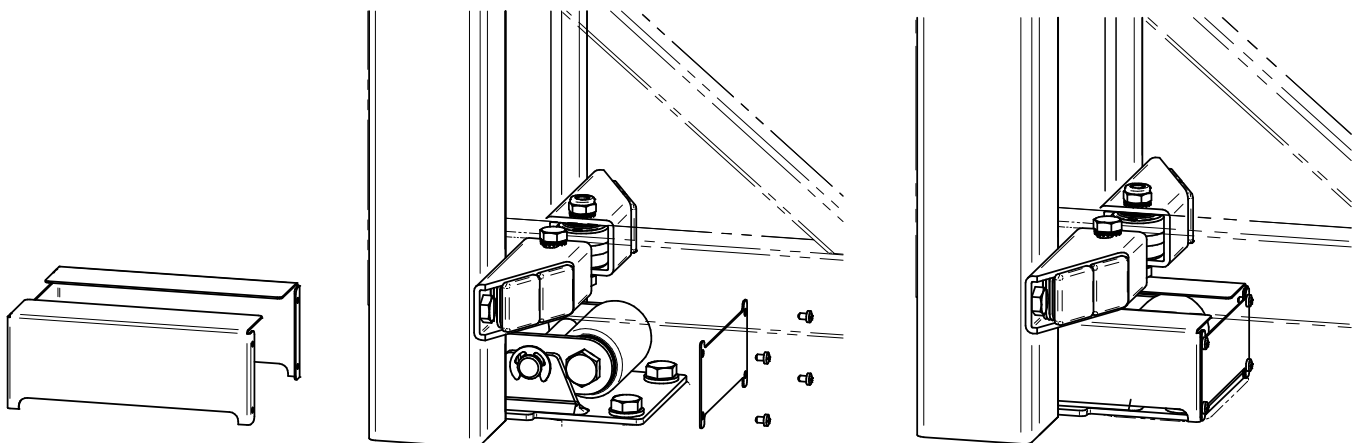




# POSITION END RAIL

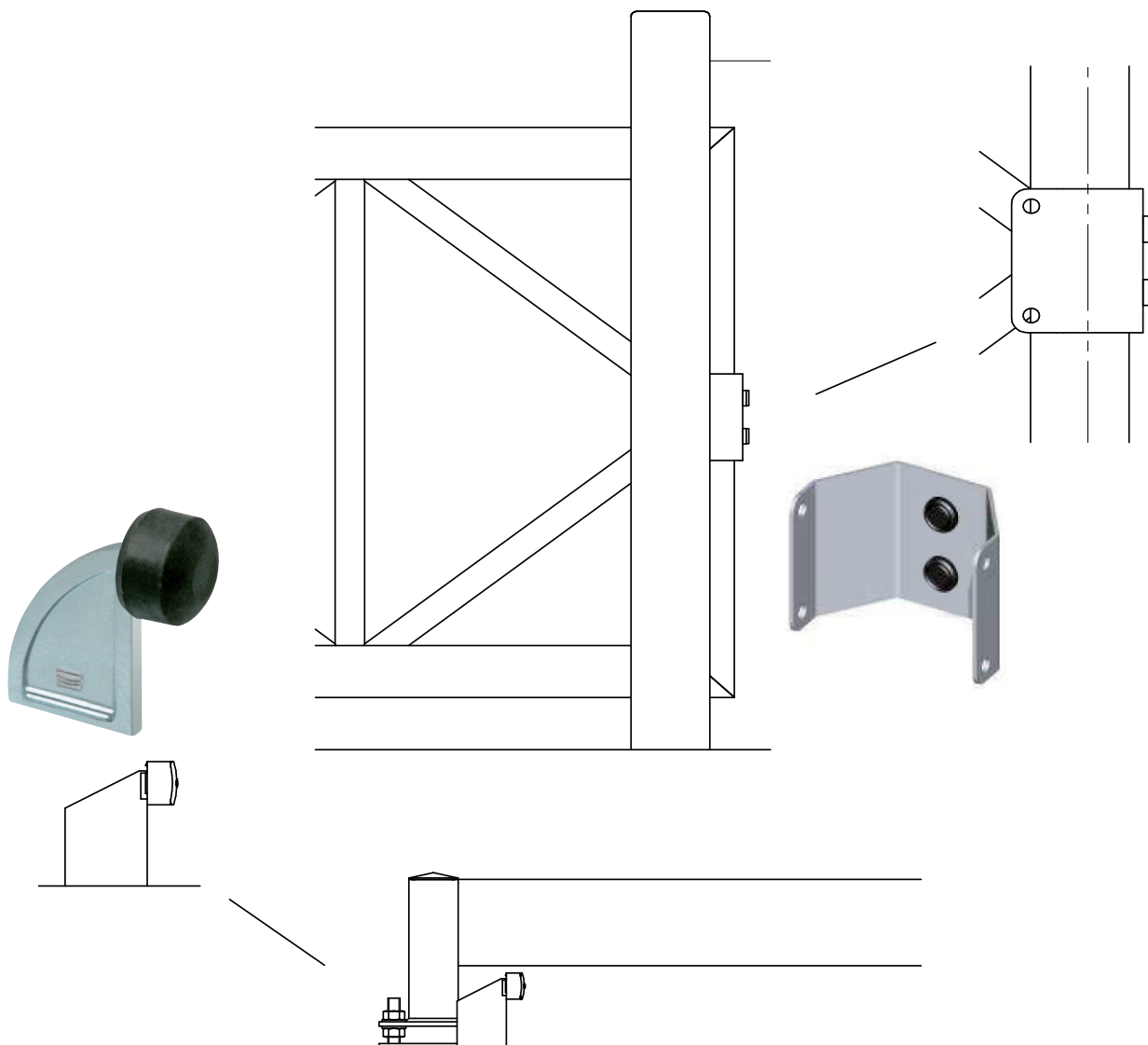


# BASE ROLLER COVER

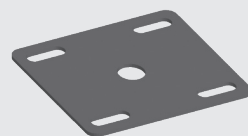


# END STOPS

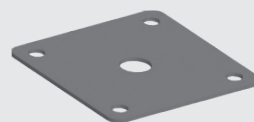
Not supplied with  
Guardian Gate Packs



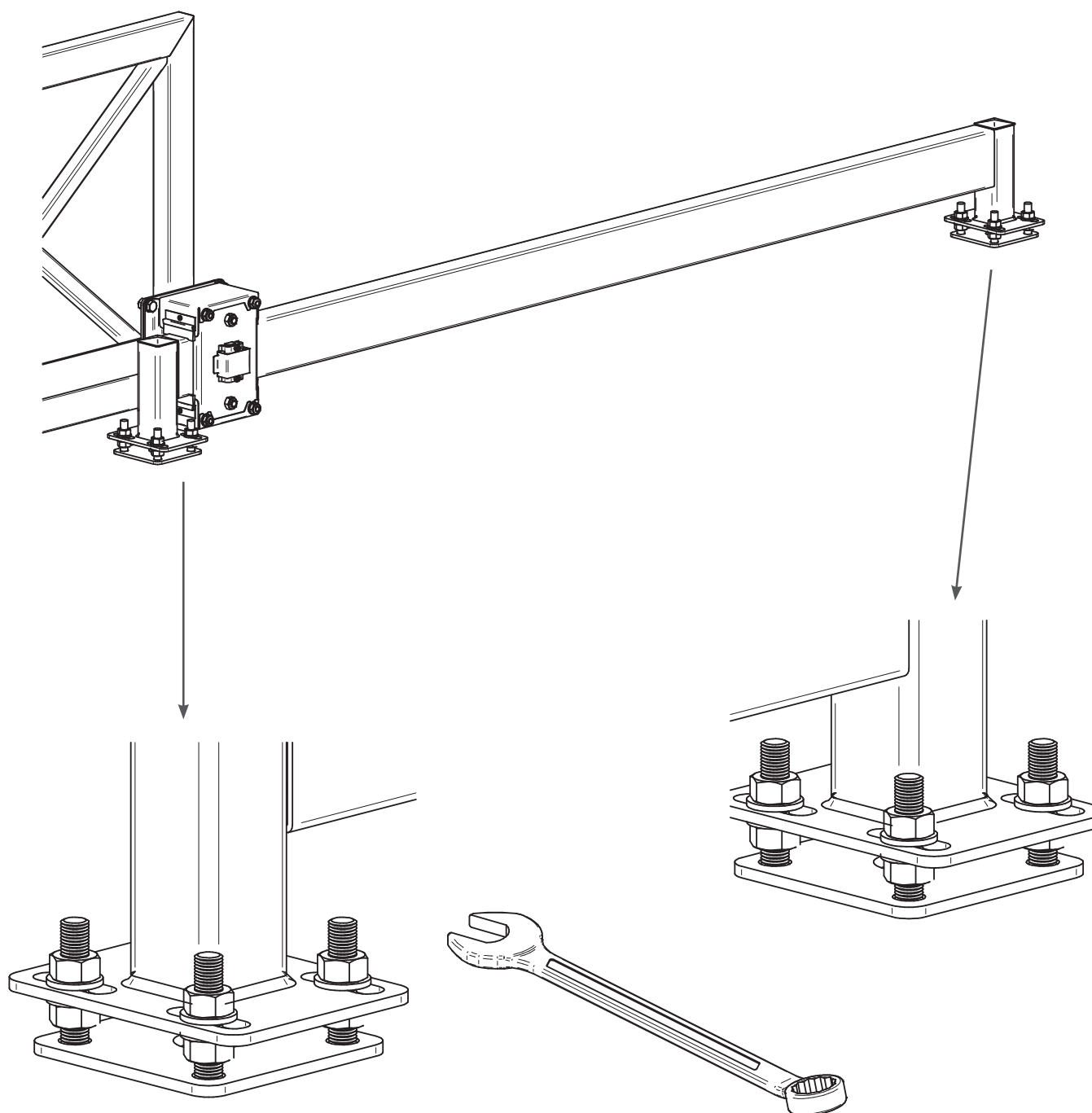
# TAIL PLATES



Adjuster Plate



Mount Plate



# TAIL ADJUSTMENT

