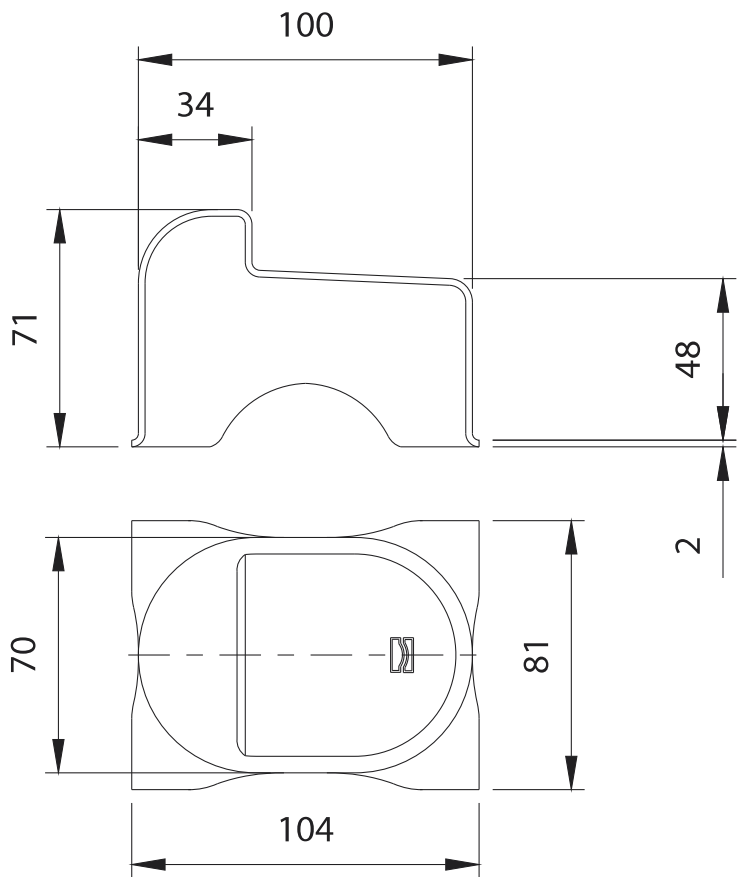




**Art. 169**



TECHNICAL CHARACTERISTICS				
			169	
WEIGHT OF PART			0,32 Kg	
MAX. IMPACT AT 0.3 m/s			1200 Kgf	
MAINTENANCE FREQUENCY				
PRIVATE HOME	BUSINESS	WAREHOUSE	CONDOMINIUM <20 UNITS	CONDOMINIUM > 20 UNITS
1 YEAR *	1 YEAR *	1 YEAR *	6 MONTHS*	6 MONTHS*
Check for any deformation on the striker.				
Make sure the leaf acts like a single body with the base.				
*The scheme refers to a normal workplace (not marine or particularly aggressive environments).				



Art.	Code		
169	10700905 001	25	7,90

