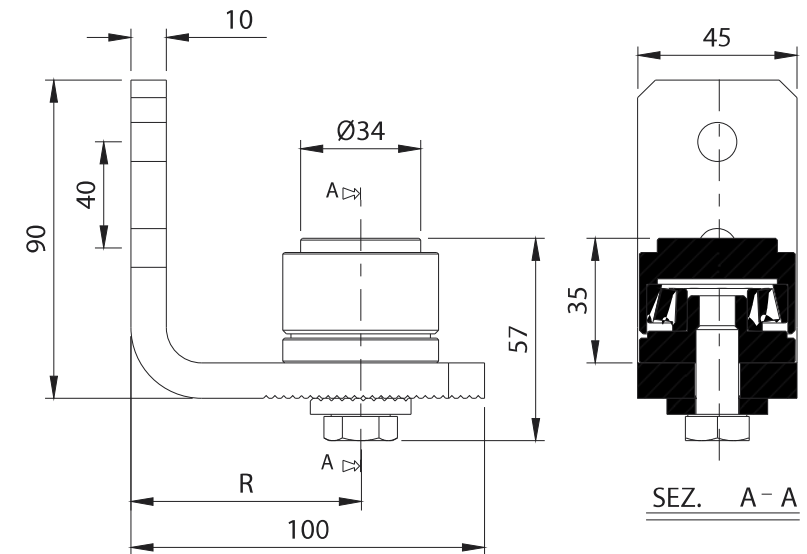






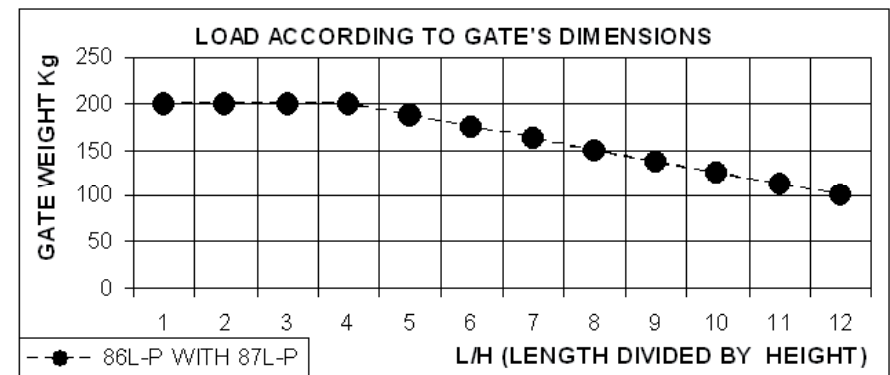
Art. 87 L-P

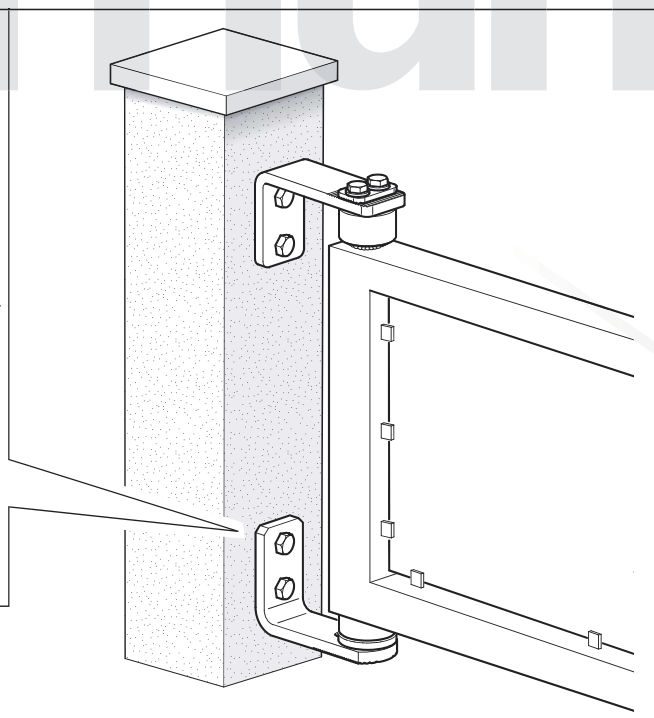
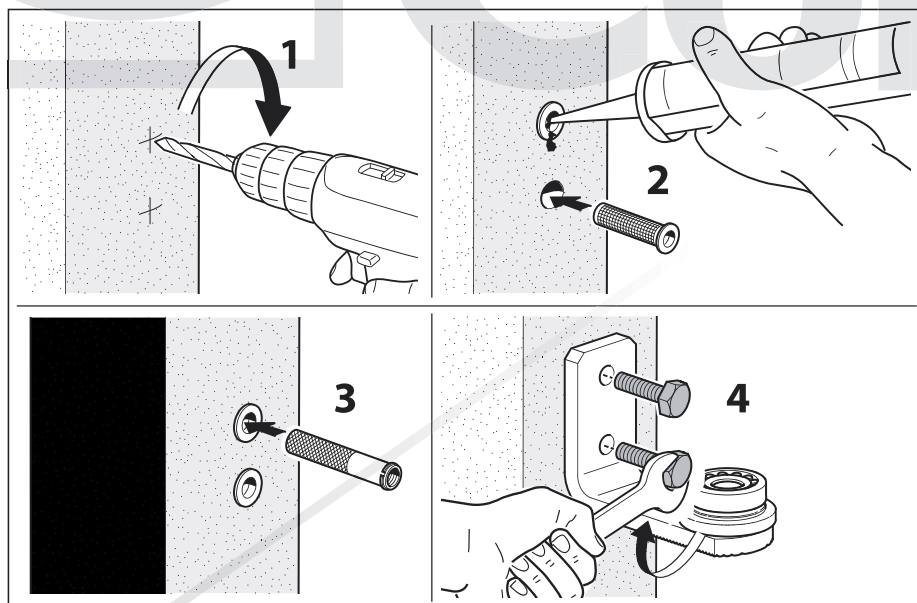
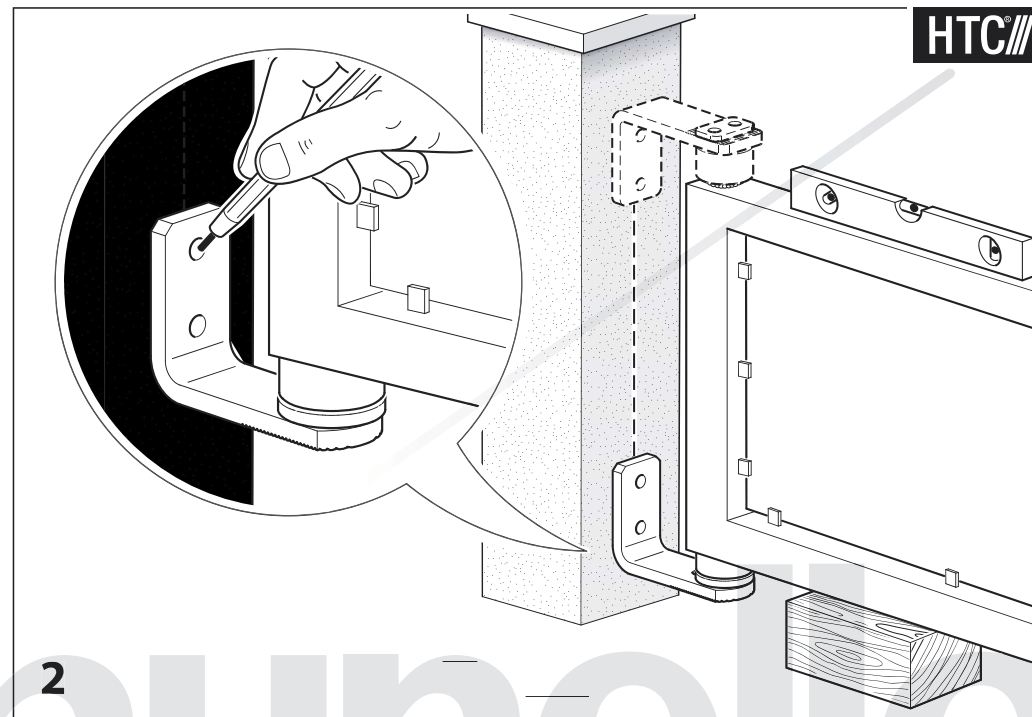
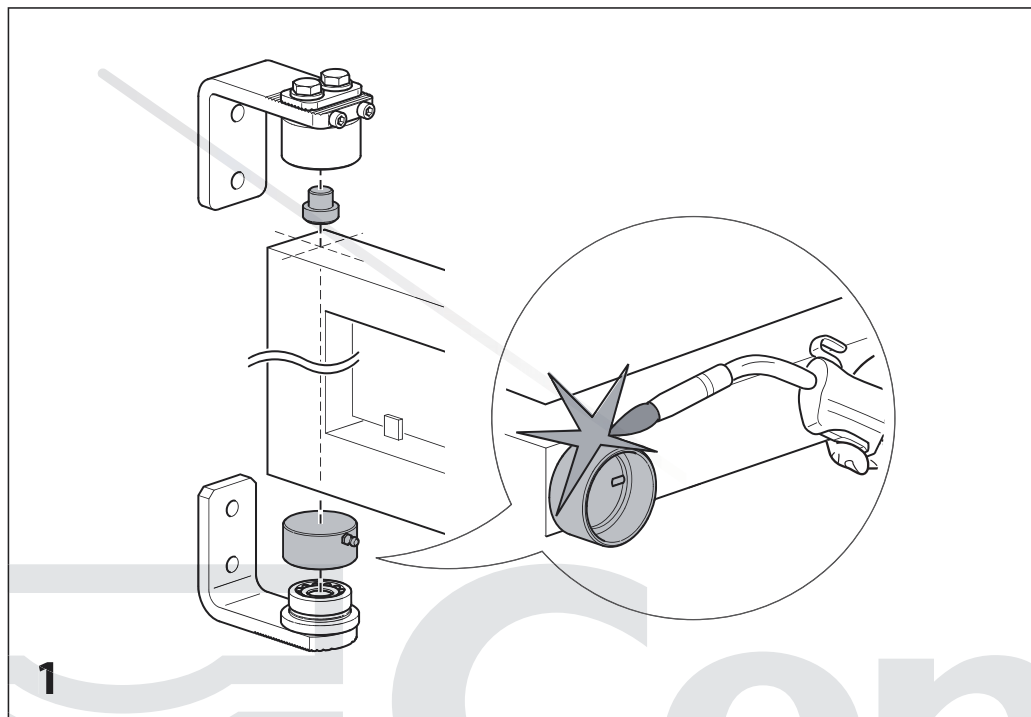


TECHNICAL CHARACTERISTICS				
	87L-P			
WEIGHT OF PART	0,74Kg			
LOAD-BEARING CAPACITY (P) L/H=1	200 Kg (with top hinge 86L-P)			
DURATION 110% (P)	260.000 Cycles (with top hinge 86L-P)			
MAINTENANCE FREQUENCY				
PRIVATE HOME	BUSINESS	WAREHOUSE	CONDOMINIUM <20 UNITS	CONDOMINIUM > 20 UNITS
1 YEAR *	1 YEAR *	1 YEAR *	6 MONTHS *	6 MONTHS *
Check hinge wear.				
Check fixing of plugs. Check welds and horizontality of sash.				
*The scheme refers to a normal workplace (not marine or particularly aggressive environments).				



Art.		Code	R	 COPPIA		
87L-P	little Ø45	10801305 001	50-80	200	4	3,00





HTC